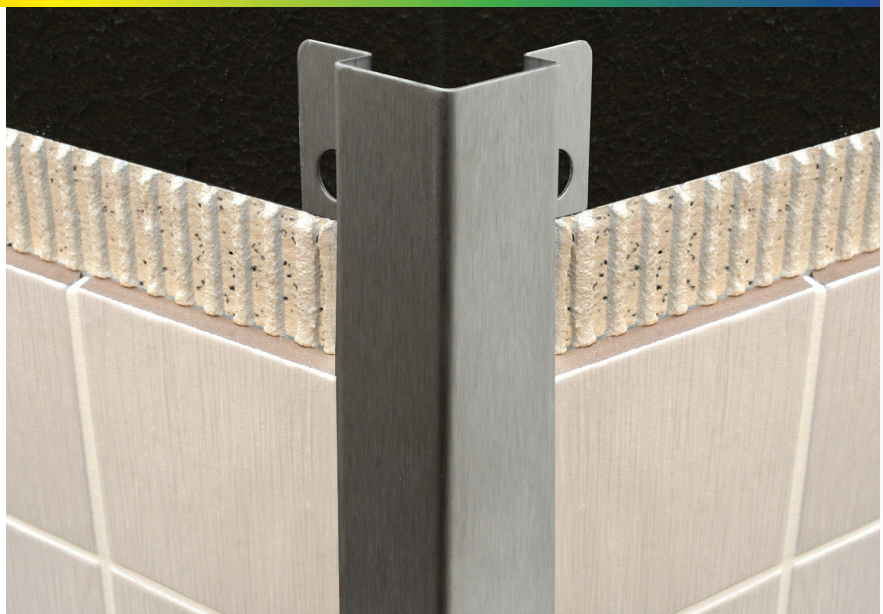
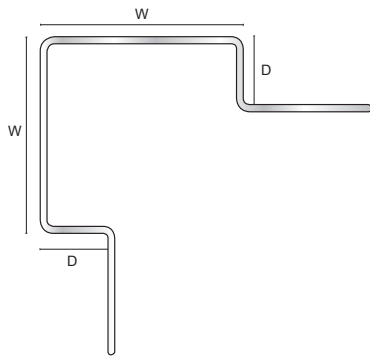


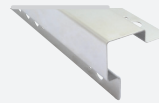
# EPS

Product Datasheet 2.19

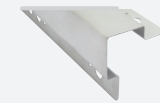


## Stainless Steel Protector

84 Stainless Steel



102 Brushed Stainless Steel



### Product Description

Genesis EPS is a Stainless Steel profile designed to protect the edge of a wall surface. The profile is a right angle design with tapered edges. Perfect for heavy traffic areas where wall corners are exposed to potential damage. Also perfect in areas where a high degree of hygiene is required. Genesis Stainless Steel profiles in finish 84 are supplied polished with a clear transparent film for added protection, before, during and after application - as standard.

### Technical Details

Stainless Steel is a corrosion resistant chromium/ nickel alloy steel that is strong and durable with excellent lustre. However, it is not rustproof, particularly in the harsh environment of a swimming pool. Chlorine and bromine used for sanitization are highly caustic chemicals for stainless steel and heat and humidity enhance the corrosiveness of these chemicals. Regular cleaning is the best way to prevent corrosion and add to the service life for your profiles and any other stainless steel equipment. The goal of your cleaning and maintenance program should be to keep the stainless steels protective Chromium oxide layer intact. This is what prevents corrosion. Varying Stages of contamination.

### Dimensions

Available in 2.5m lengths and 30mm x 10mm 30mm x 12mm, 50mm x 10mm and 50mm x 12mm widths in Brushed or Polished Stainless Steel.

### Maintenance

Advanced Cleaning for Stainless Steel Discoloration.

#### Tarnish or Water Stains:

The first stage of corrosion is completely on the surface and is easily removed by most commercial metal polishes. Discoloration will be greater at indoor facilities due to the chlorine vapor trapped in an inside environment.

#### Lightning Rusting:

Rust is visible at this stage but little or no pitting has yet occurred. A stronger cleaning agent, such as Simichrome Polish, is required.

#### Heavy Rusting:

A deep coat of rust with surface pitting can develop if corrosion has been left unchecked for a long time. For advanced corrosion naval jelly is recommended.

#### Surface Restoration:

To remove or reduce pitting damage caused by corrosion has been left unchecked for a long time. Scotchbrite works well for this purpose. Work only in the direction of the existing grain and never use steel wool.

### Installation

1. Select EPS according to tile thickness.
2. Trowel tile adhesive over the area that forms the perimeter of the tiled covering.
3. Press the perforated legs of the EPS into the tile adhesive and align, mechanical fix if required
4. Trowel additional adhesive over the perforated legs to ensure full coverage.
5. Solidly embed the tiles so that the tiled surface is flush with the top of the profile (the profile should not be higher than the tiled surface, but rather up to approx. 1 mm lower).
6. Fill the joint completely with grout.

#### Stainless Steel AISI 304 / DIN 1.4301

C%	0.0 - 0.7
Mn%	0.0 - 2.00
Si%	0.0 - 1.00
P%	0.0 - 0.05
S%	0.0 - 0.03
Cr%	17.50 - 19.50
Ni%	8.00 - 10.50
N%	0.0 - 0.11

+44 (0)1642 713000 [info@genesis-gs.com](mailto:info@genesis-gs.com)  
[www.genesis-gs.com](http://www.genesis-gs.com)



**Genesis**  
For the Perfect Finish