



Case Study - Retail

John Lewis Oxford Street, London

Project Specifications

Products Specified: NSL31

Insert Colours: 16 Black

Sector: Retail

Project Description

John Lewis & Partners recently had a refurbished floor installed at one of its flagship stores in London's Oxford street.

Due to an old and tired floor involving issues involving lifting and safety – It was no longer suitable for the general public to use.

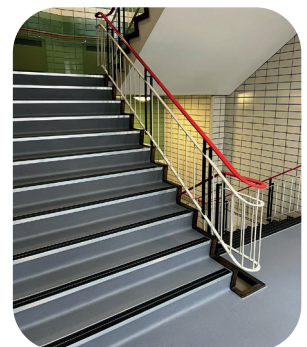
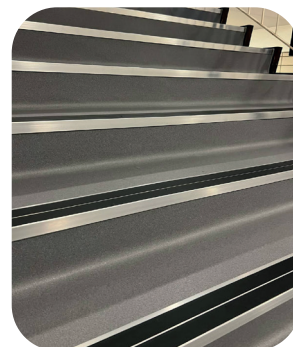
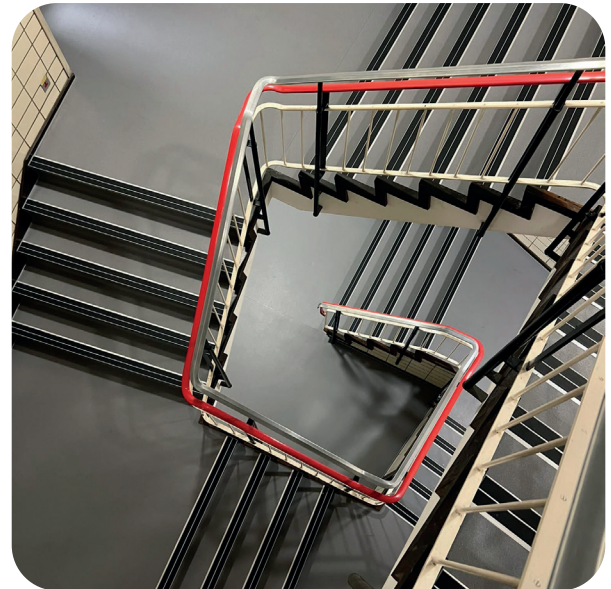
TW Contract flooring installed this project out of hours during the stores closure, and the project spanned 3 weeks.

Alongside a new vinyl floor from Altro, TW Contact flooring installed Genesis NSL31 nosing with black insert to ensure compliance with BS 8300 -2-2018 & BS 8493 - This also includes DDA regulations.

The NSL insert was suitable for slip resistance and flexibility. Manufactured from a special blend of PVC, it's hard wearing and holds anti-slip properties that prevent slips and falls.

Project Address - 300 Oxford street – John Lewis & Partners

Contractor - TW Contract Flooring



+44 (0)1642 713000 info@genesis-gs.com
www.genesis-gs.com

 **Genesis**
For the Perfect Finish