



## Case Study - Office

### Louisa Rylands House, Birmingham

#### Project Specifications

Products Specified: NHD05, NHD17 & NHD24

Insert Colours – 27 Canvas

Finishes – Powder coated Oil Rubbed Bronze

Sector: Office

#### Project Description

Louisa Rayland House is located in the heart of the Colmore business district. The Building benefits from the city's best amenities on it's doorstep.

The Grade 2 listed building has been comprehensively refurbished.

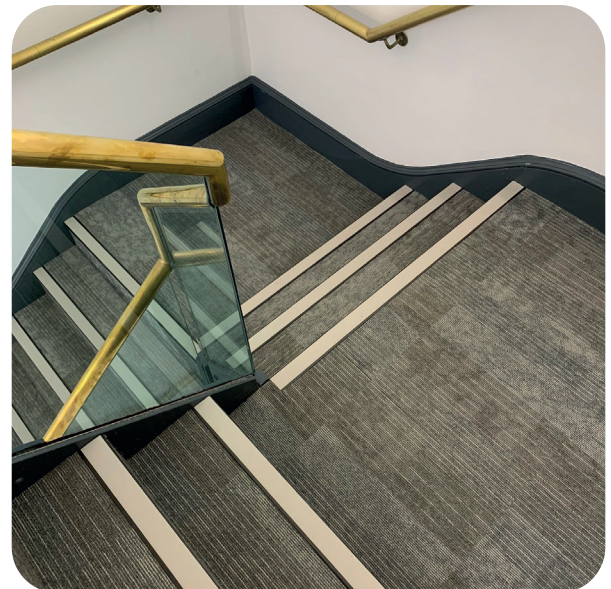
To prevent trips and falls on staircases within the building, and keeping within the overall quality and finish. Genesis NHD stair nosing was specified and installed, our Canvas inserts providing a contrast of at least 30 points in relation to the floor covering and nosing colour.

The nosing was powder coated to oil bronze, a bespoke colour that keeps aesthetics and suitability in perfect harmony.

With over 25 years of experience and success, Office Innovations from Nottingham carefully procured, and installed the nosing on this project.

Distribution - Cheshire's of Nottingham

Project address – Louisa Rylands House, 44 Newhall Street, Birmingham B3 3PL.



+44 (0)1642 713000 [info@genesis-gs.com](mailto:info@genesis-gs.com)  
[www.genesis-gs.com](http://www.genesis-gs.com)

 **Genesis**  
For the Perfect Finish