



## Case Study - Commercial

### Swansea Arena

#### Project Specifications

Product Specified: NSL15 with bespoke curve

Colour Specified: Tredsafe® white inserts

Sector: Commercial

#### Project Description

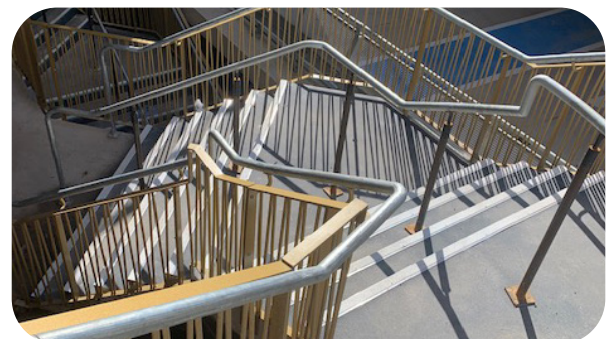
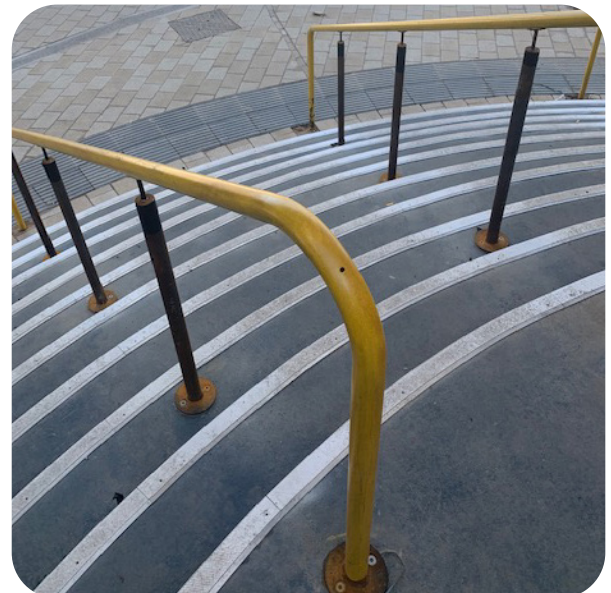
The Arena at Copr Bay is a world-class 3,500-capacity live performance and conference venue and the centerpiece for the city-wide regeneration of Swansea City Centre. With a vision to draw in over 230,000 visitors and stage 160 events a year, acts will include music, comedy, theatre, gaming, and e-sports.

The final structural solution includes a combination of fixed terrace seating and retractable seating allowing the auditorium space to be operated in theatre mode with seating throughout and a mix of seating and standing for music events

Genesis provided a total of 510lm of NSL15 stair nosing including 34 curved staircases and Tredsafe® white inserts.

The nosing's proved vital in preventing slips and falls when accessing the external staircases from the carpark.

**Project address** - Swansea Arena, Oystermouth Rd, Maritime Quarter, Bae Copr Bay, Swansea SA1 3BX



+44 (0)1642 713000 [info@genesis-gs.com](mailto:info@genesis-gs.com)  
[www.genesis-gs.com](http://www.genesis-gs.com)

 **Genesis**  
For the Perfect Finish