



## Case Study - Corporate

### International Convention Centre, South Wales

#### Project Specifications

Product Specified: NSL01  
NHD05  
NLT108  
NSA290

Colour Specified: Ice Grey

Sector: Corporate

#### Project Description

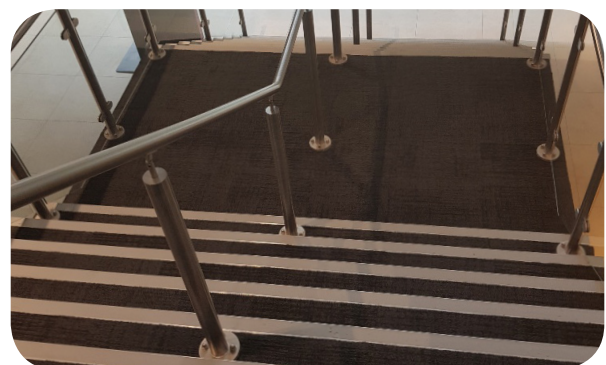
The £83m development at ICCW at Celtic Manor Resort, Newport, South Wales, a joint venture between the Welsh Government and the Celtic Manor Resort, will provide 26,000 sqm of total floor space for meetings, conferences and exhibitions when the project is finished. That's about the size of four international rugby pitches, and could accommodate 5,000 conference delegates at any one time.

The convention centre will house a 1,500 seater auditorium, Europe's largest pillar free ballroom and have a 700 space underground carpark.

We were delighted to be able to provide stair nosings's and step edges to aid in the construction of this project.

The Genesis NSL01 with Ice Grey inserts have been used in conjunction with the blue safety flooring throughout the building. NHD05 with Ice Grey inserts have been used throughout all main and side stairwells along with NSA stair edges to complete the look.

The NLT aluminium tile-in step edge profiles have also been used throughout the building to add protection to step edges and provide a classic look.



+44 (0)1642 713000 [info@genesis-gs.com](mailto:info@genesis-gs.com)  
[www.genesis-gs.com](http://www.genesis-gs.com)

 **Genesis**  
For the Perfect Finish