



Case Study - Education

University of South Africa - Johannesburg

Project Specifications

Product Specified: NSL23

Insert Specified: External

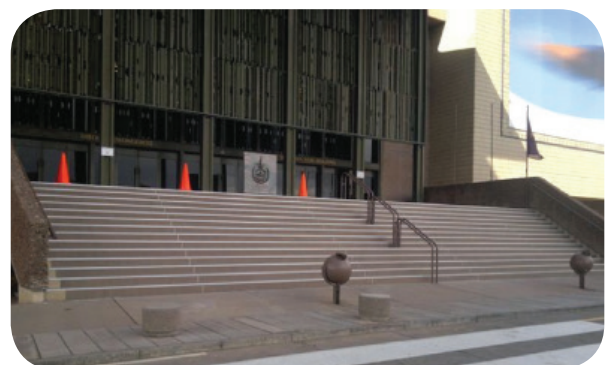
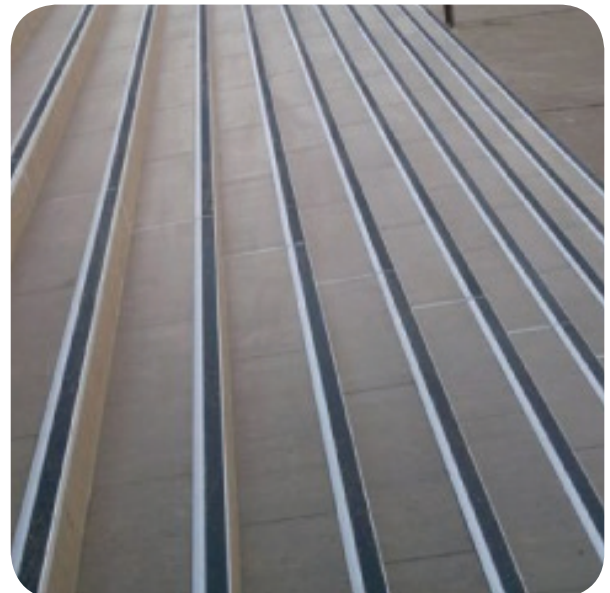
Sector: Education

Project Description

It is widely acknowledged that one third of all reported fall accidents occur on stairs, with one serious injury every 5 minutes. Genesis range of Stair Nosing profiles significantly reduce the risk of accidents on stairs whilst also protecting the edge of the floor covering from impact damage.

When The University of South Africa approached us with a specific problem that they had with replacing the existing damaged, unsuitable and dangerous nosing on the main building steps. We were able to offer them the benefit of our years of global experience where extreme temperature variations and a need for popular design never stand in the way of construction challenges.

The NSL Profile from Genesis is a specially developed profile designed to be used outside to protect the edge of the step and prevent slipping. The Silicone Carbide Insert is designed and tested for slip resistance for pedestrian surface materials and tested against the effects of weathering to ensure optimum performance.



+44 (0)1642 713000 info@genesis-gs.com
www.genesis-gs.com

 **Genesis**
For the Perfect Finish